



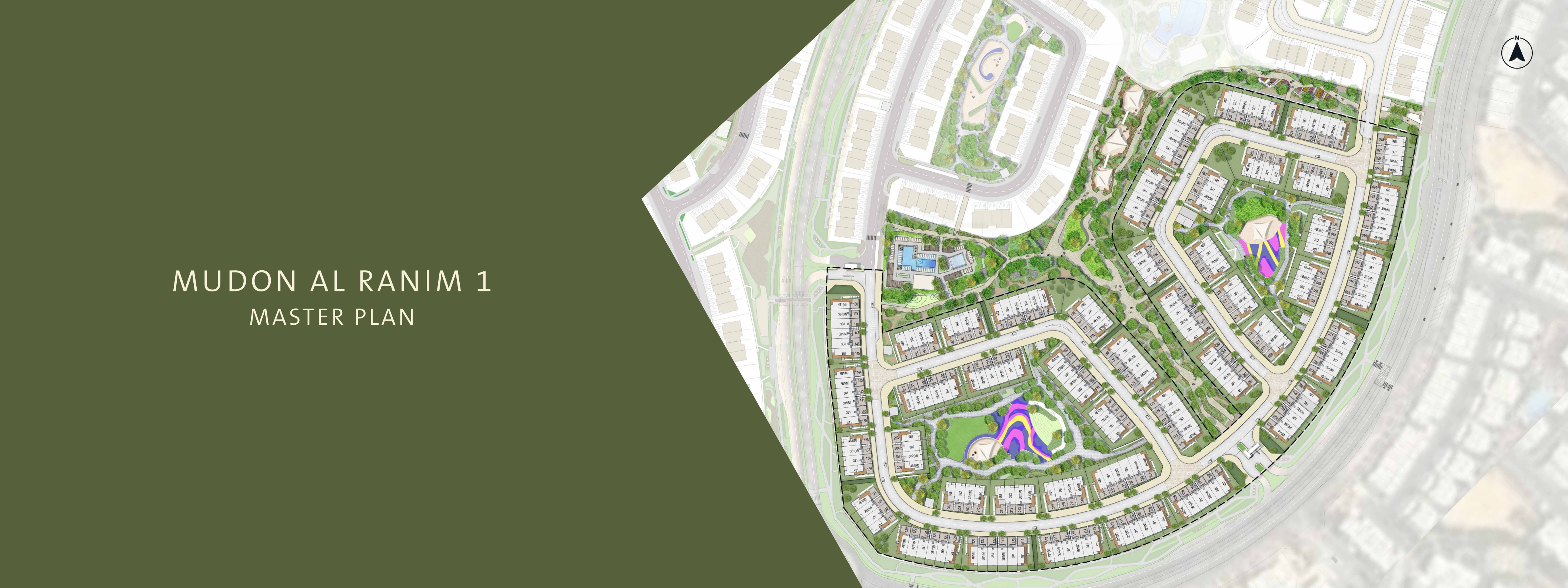
MUDON AL RANIM

FLOOR PLANS



MUDON AL RANIM 1 MASTER PLAN

An aerial photograph of the Mudon Al Ranim 1 Master Plan site. The image shows a large residential development with numerous multi-story apartment buildings arranged in a grid-like pattern. The buildings are surrounded by green spaces, including lawns, trees, and a central park area with a colorful, abstract sculpture. A road runs along the top and right sides of the site, and a parking area is visible on the left. The overall layout is modern and planned.





FLOOR PLANS

3-BEDROOM TOWNHOUSE-TYPE 3B1



GROUND LEVEL



FIRST LEVEL

3-BEDROOM+MAID - MID UNIT

TOTAL AREA: 206 SQM / 2,217 SQFT

03 BEDROOMS 02 BATHROOMS



3-BEDROOM TOWNHOUSE-TYPE 3B1(M)



GROUND LEVEL



FIRST LEVEL

3-BEDROOM+MAID - MID UNIT (MIRRORED)

TOTAL AREA: 206 SQM / 2,217 SQFT

03 BEDROOMS 02 BATHROOMS



Note: Plan and details included are indicative only and are subject to change by the Master Developer/Seller at its sole discretion without notice and/or liability. All images, including features, finishes, furnishings and scale are illustrative only. Final areas, dimensions, layout and materials may differ from those stated, and the layout may be mirrored. The plot area shown is illustrative only and the actual plot area may vary depending on the plot location in the Master Community as selected by the purchaser.

Note: Plan and details included are indicative only and are subject to change by the Master Developer/Seller at its sole discretion without notice and/or liability. All images, including features, finishes, furnishings and scale are illustrative only. Final areas, dimensions, layout and materials may differ from those stated, and the layout may be mirrored. The plot area shown is illustrative only and the actual plot area may vary depending on the plot location in the Master Community as selected by the purchaser.

3-BEDROOM + FAMILY TOWNHOUSE-TYPE 3B2



GROUND LEVEL

FIRST LEVEL

ROOF LEVEL

3-BEDROOM+FAMILY & MAID - MID UNIT

TOTAL AREA: 238.55 SQM / 2,568 SQFT

03
BEDROOMS

02
BATHROOMS



3-BEDROOM + FAMILY TOWNHOUSE-TYPE 3B2(M)



GROUND LEVEL

FIRST LEVEL

ROOF LEVEL

3-BEDROOM+FAMILY & MAID - MID UNIT (MIRRORED)

TOTAL AREA: 238.55 SQM / 2,568 SQFT

03
BEDROOMS

02
BATHROOMS



Note: Plan and details included are indicative only and are subject to change by the Master Developer/Seller at its sole discretion without notice and/or liability. All images, including features, finishes, furnishings and scale are illustrative only. Final areas, dimensions, layout and materials may differ from those stated, and the layout may be mirrored. The plot area shown is illustrative only and the actual plot area may vary depending on the plot location in the Master Community as selected by the purchaser.

Note: Plan and details included are indicative only and are subject to change by the Master Developer/Seller at its sole discretion without notice and/or liability. All images, including features, finishes, furnishings and scale are illustrative only. Final areas, dimensions, layout and materials may differ from those stated, and the layout may be mirrored. The plot area shown is illustrative only and the actual plot area may vary depending on the plot location in the Master Community as selected by the purchaser.

4-BEDROOM TOWNHOUSE-TYPE 4B1



GROUND LEVEL



FIRST LEVEL

4-BEDROOM+MAID - END UNIT

TOTAL AREA: 236.78 SQM / 2,549 SQFT

04 BEDROOMS
03 BATHROOMS



4-BEDROOM TOWNHOUSE-TYPE 4B1(M)



GROUND LEVEL

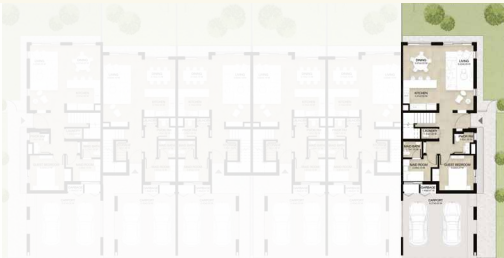
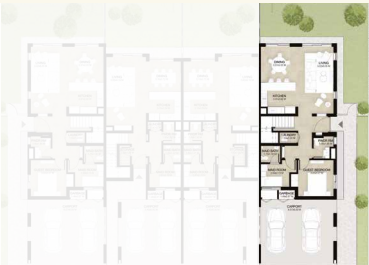


FIRST LEVEL

4-BEDROOM+MAID - END UNIT (MIRRORED)

TOTAL AREA: 236.78 SQM / 2,549 SQFT

04 BEDROOMS
03 BATHROOMS



Note: Plan and details included are indicative only and are subject to change by the Master Developer/Seller at its sole discretion without notice and/or liability. All images, including features, finishes, furnishings and scale are illustrative only. Final areas, dimensions, layout and materials may differ from those stated, and the layout may be mirrored. The plot area shown is illustrative only and the actual plot area may vary depending on the plot location in the Master Community as selected by the purchaser.

Note: Plan and details included are indicative only and are subject to change by the Master Developer/Seller at its sole discretion without notice and/or liability. All images, including features, finishes, furnishings and scale are illustrative only. Final areas, dimensions, layout and materials may differ from those stated, and the layout may be mirrored. The plot area shown is illustrative only and the actual plot area may vary depending on the plot location in the Master Community as selected by the purchaser.

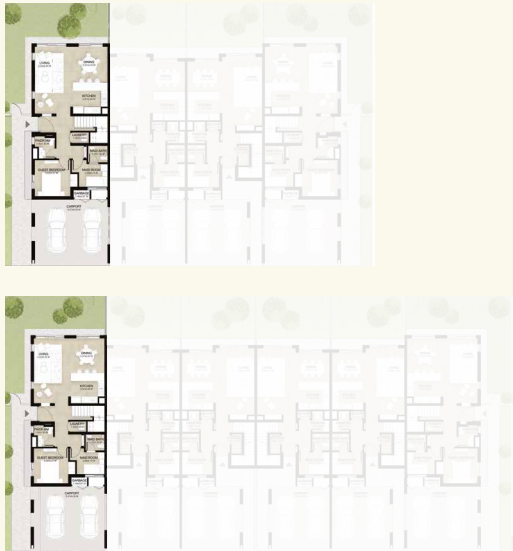
4-BEDROOM + FAMILY TOWNHOUSE-TYPE 4B2



4-BEDROOM+FAMILY & MAID - END UNIT

TOTAL AREA: 276.70 SQM / 2,978 SQFT

04 BEDROOMS
03 BATHROOMS



4-BEDROOM + FAMILY TOWNHOUSE-TYPE 4B2(M)



4-BEDROOM+FAMILY & MAID - END UNIT

(MIRRORED)

TOTAL AREA: 276.70 SQM / 2,978 SQFT

04 BEDROOMS
03 BATHROOMS



Note: Plan and details included are indicative only and are subject to change by the Master Developer/Seller at its sole discretion without notice and/or liability. All images, including features, finishes, furnishings and scale are illustrative only. Final areas, dimensions, layout and materials may differ from those stated, and the layout may be mirrored. The plot area shown is illustrative only and the actual plot area may vary depending on the plot location in the Master Community as selected by the purchaser.

Note: Plan and details included are indicative only and are subject to change by the Master Developer/Seller at its sole discretion without notice and/or liability. All images, including features, finishes, furnishings and scale are illustrative only. Final areas, dimensions, layout and materials may differ from those stated, and the layout may be mirrored. The plot area shown is illustrative only and the actual plot area may vary depending on the plot location in the Master Community as selected by the purchaser.

NOTE: PLAN AND DETAILS INCLUDED ARE INDICATIVE ONLY AND ARE SUBJECT TO CHANGE BY THE MASTER DEVELOPER/SELLER AT ITS SOLE DISCRETION WITHOUT NOTICE AND/OR LIABILITY. ALL IMAGES, INCLUDING FEATURES, FINISHES, FURNISHINGS AND SCALE ARE ILLUSTRATIVE ONLY. FINAL AREAS, DIMENSIONS, LAYOUT AND MATERIALS MAY DIFFER FROM THOSE STATED, AND THE LAYOUT MAY BE MIRRORED. THE PLOT AREA SHOWN IS ILLUSTRATIVE ONLY AND THE ACTUAL PLOT AREA MAY VARY DEPENDING ON THE PLOT LOCATION IN THE MASTER COMMUNITY AS SELECTED BY THE PURCHASER.





LUXBRIDGE
INTERNATIONAL REALTY

www.luxbridgerealty.com | hello@luxbridgerealty.com |
+97144547817 | Luxbridge International Realty® | ORN29710